

Installation Guide

Adding Neo Smart Blinds

For additional help and support, please contact
info@intersystemcontrols.com

Installation Instructions

Step 1: Open The Driver

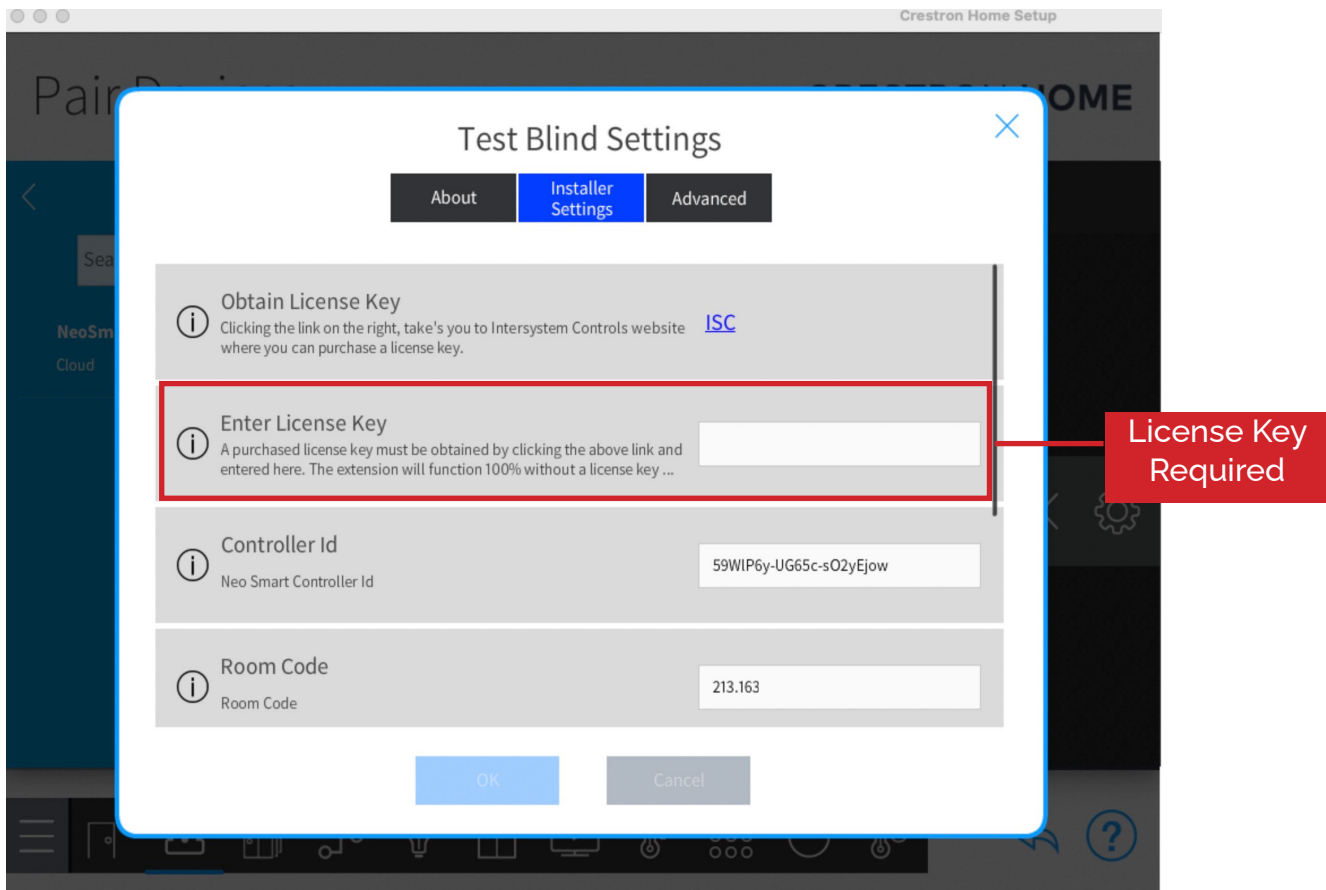
After importing the Neo Smart Driver, the driver can be found under:

[Devices](#) > [Shades](#) > [Neo Smart](#)

Step 2: Enter The License Key

The device will be added to your system and you will be asked to enter some more settings. The field is for entering the License Key to ensure continued operation of the Neo Smart integration.

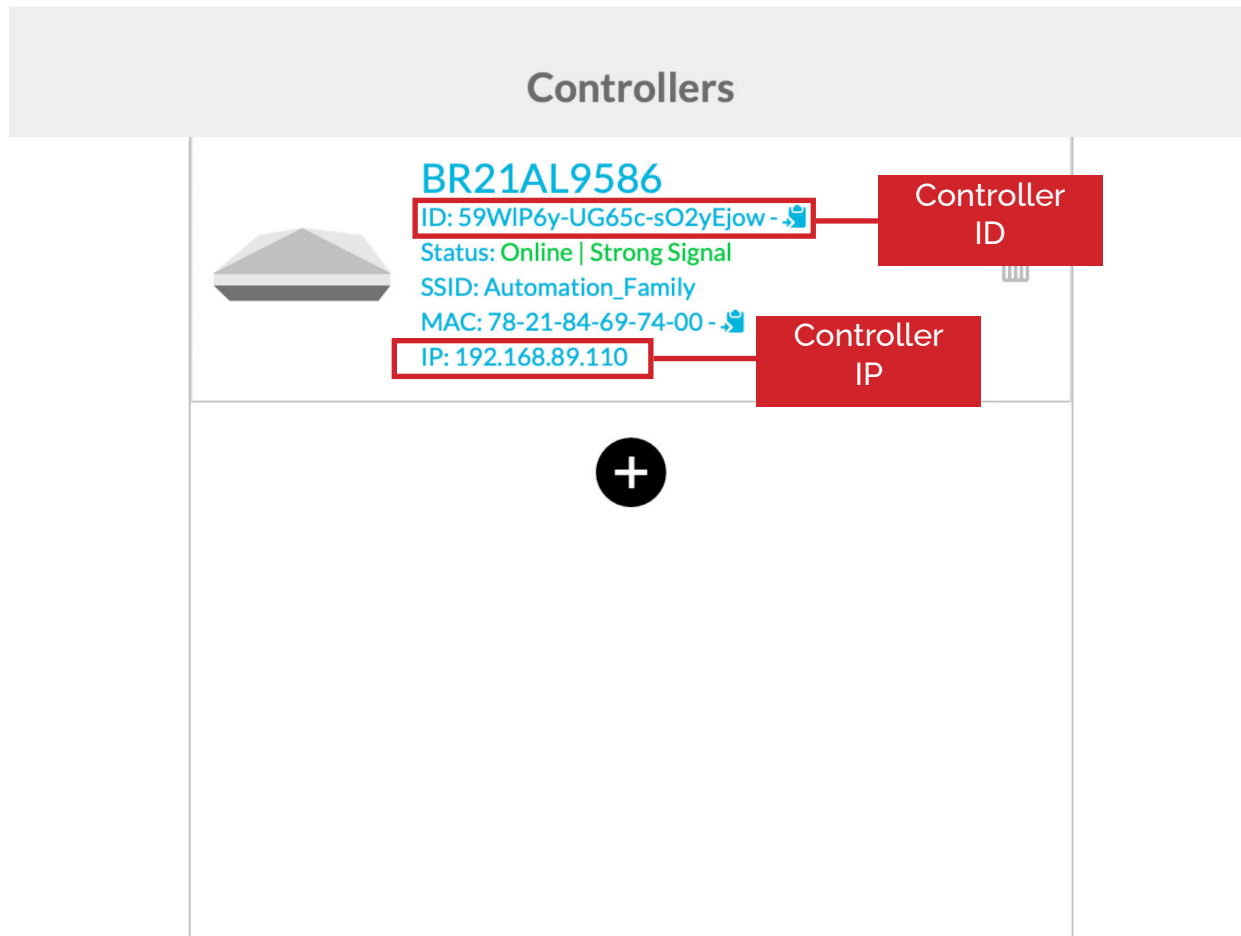
This **License Key** will be emailed to you upon successful payment of the Product License. If you do not enter a valid License Key for your processor, the integration will function for two hours, and then stop.



Step 3: Finding Controller ID and IP

Controller IP and **Controller ID** are found using the Neo Smart Blinds App at Your Controllers.

For Accounts with more than one controller, make sure to use the IP address from the controller assigned to the room where the respective blind is located.

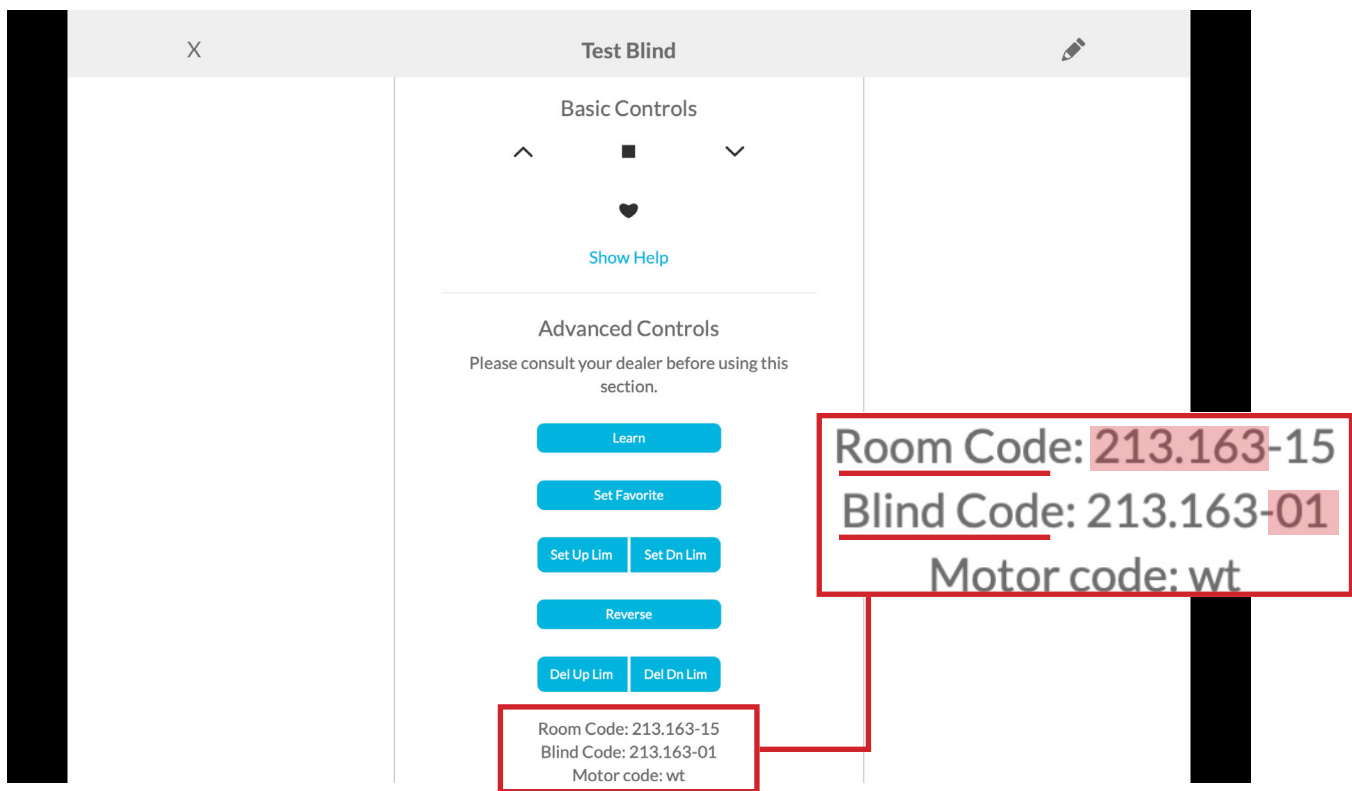


Step 4: Find The Room Code, Channel Numbers, and Motorcode

Using the app, go to the Settings page of each blind to find the necessary ID numbers.

The **Room Code** is the first 6 digits of the blind including the period. In the example, here the room code is **213.163**.

The **Channel** is the 2 numbers after the dash (-) in the **blind code**. In our example, the blind code is **01**.



Use channel 15 to control all blinds as a group.

Use the table below to get the appropriate code for the motor code.

Our example has the app motor code of wt which you can see translates to a Crestron Home motorcode of 10

App Motor Code	Crestron Home Motorcode
bf	0
vb	1
tb	2
no	3
rx	4
nc	5
k1	6
k2	7
dy	8
by	9
wt	10

Step 4: Fill In Details

Ensure the details obtained above are filled in the Settings

The screenshot shows a 'Test Blind Settings' dialog box with the following fields:

- Room Code:** 213.163
- Controller Ip:** 192.168.89.110
- Channel:** 01
- Motorcode:** 10

